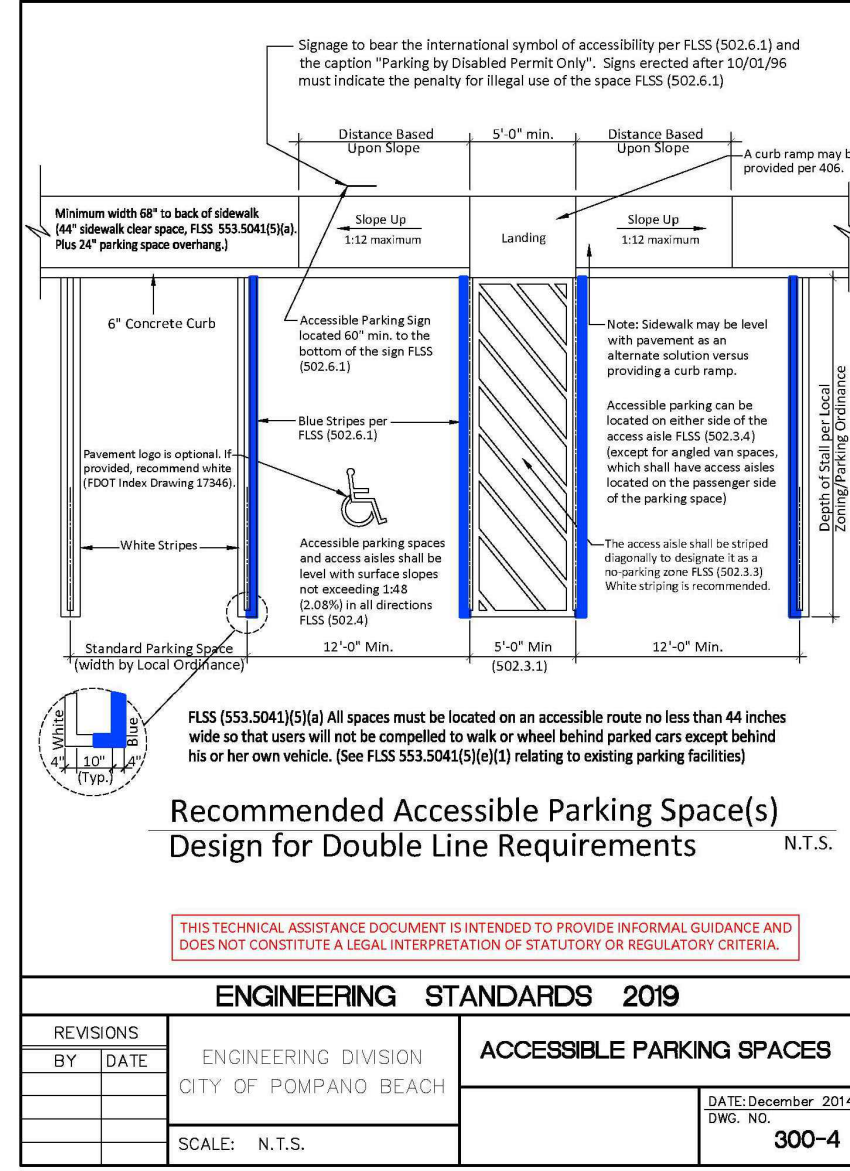
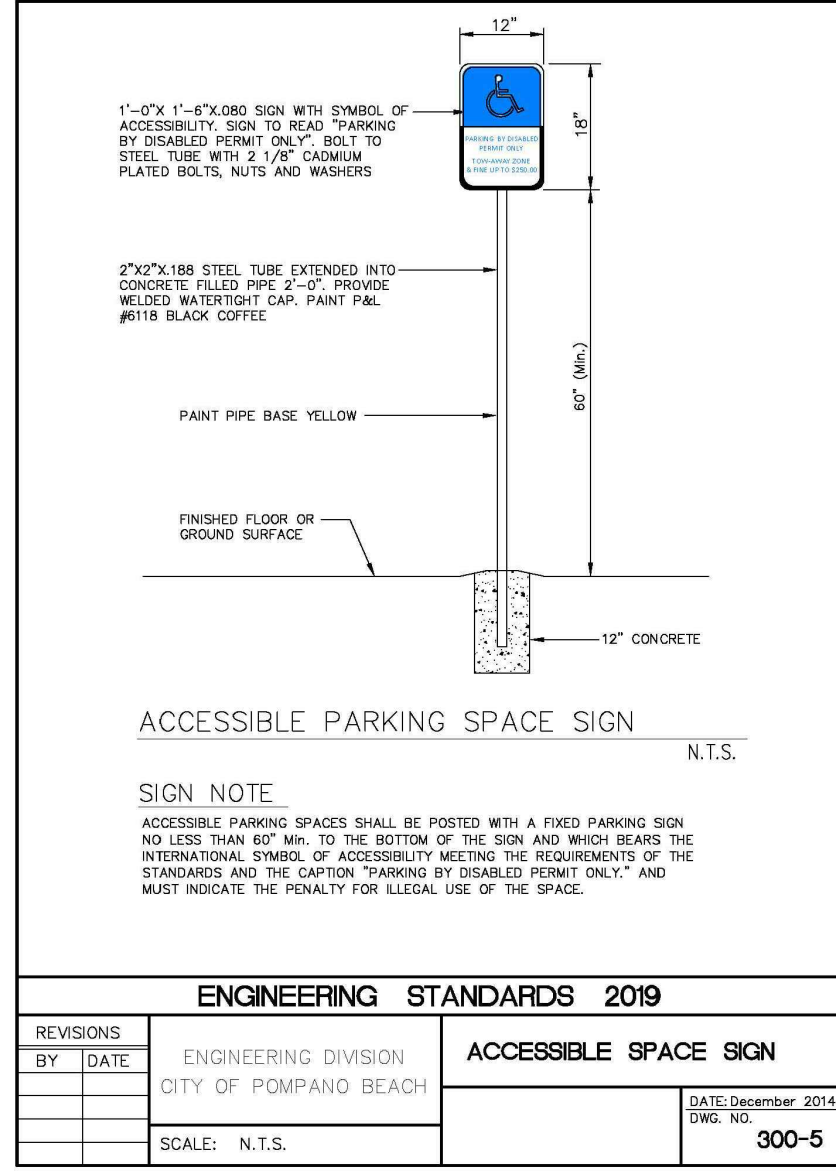


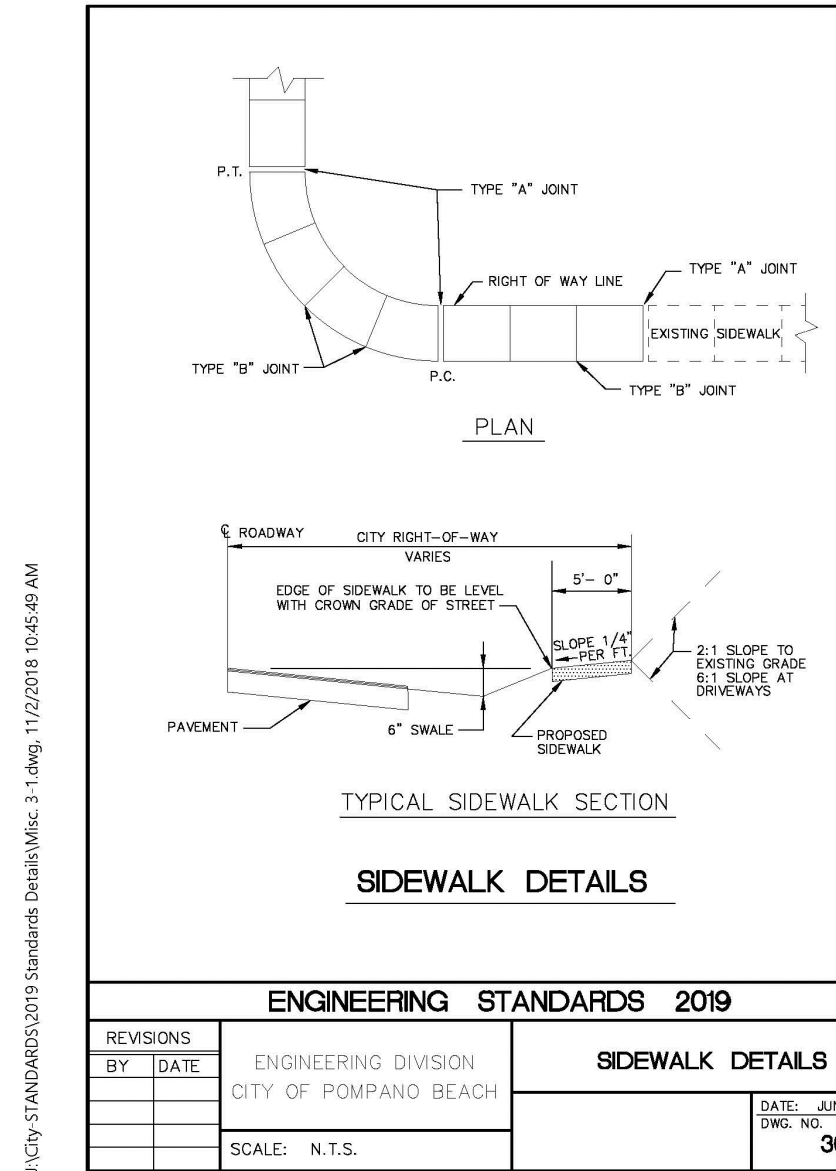
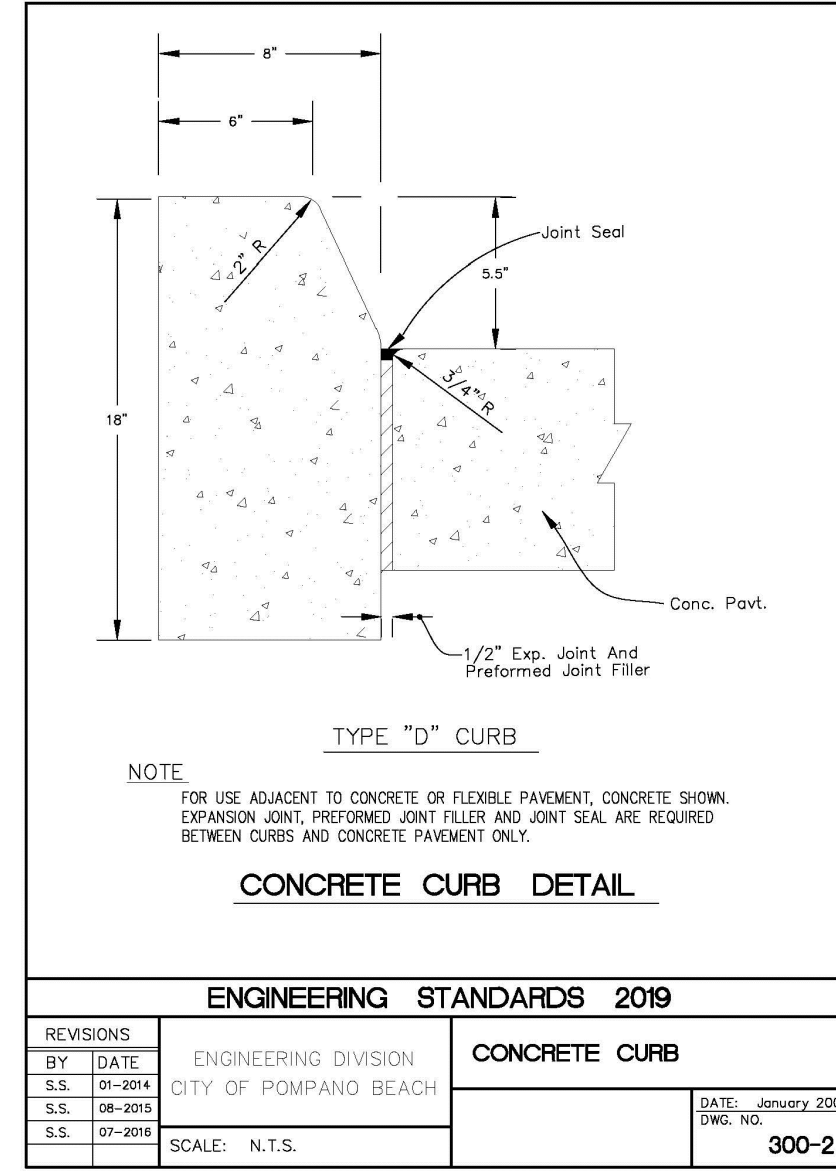
1 PARKING STRIPING



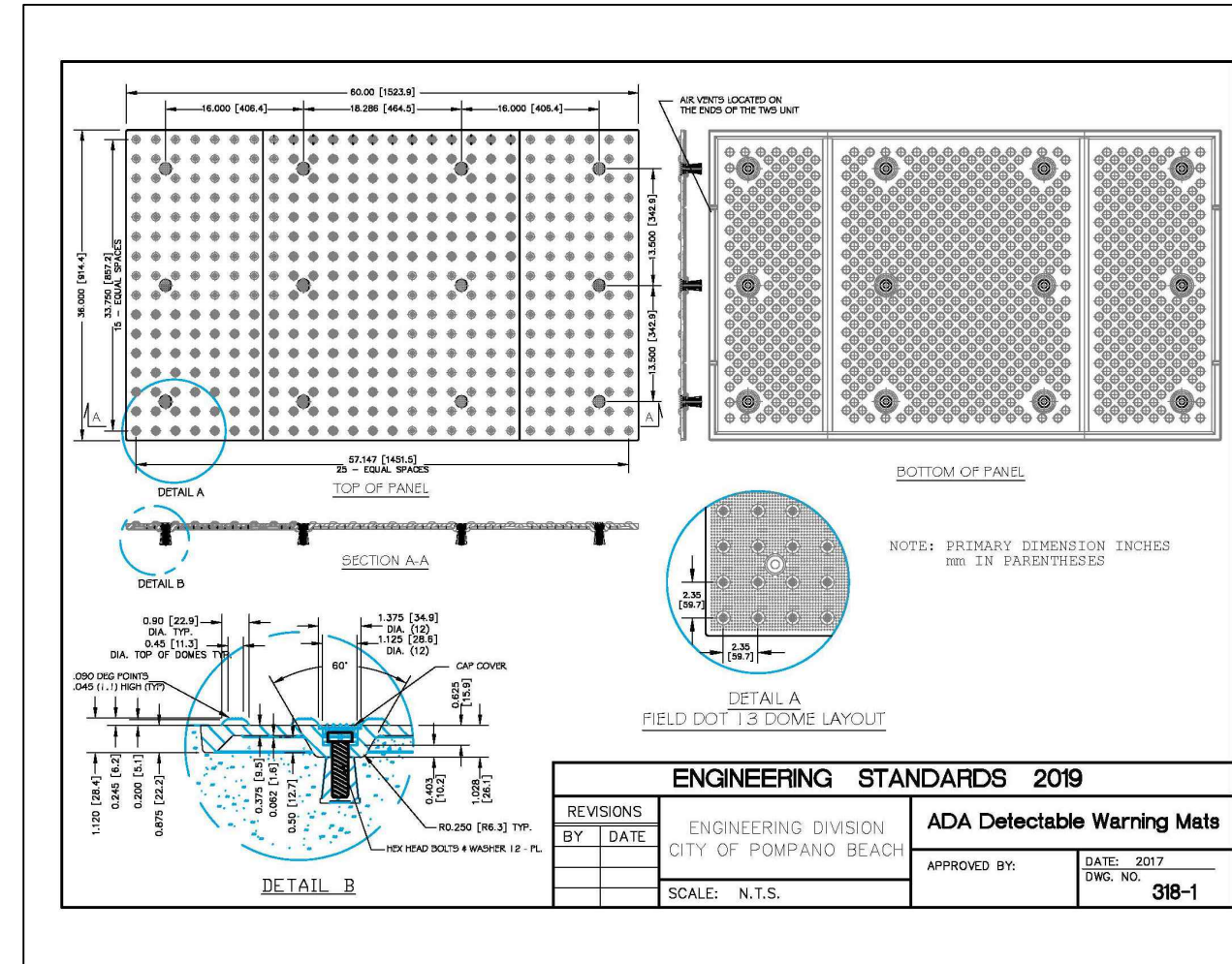
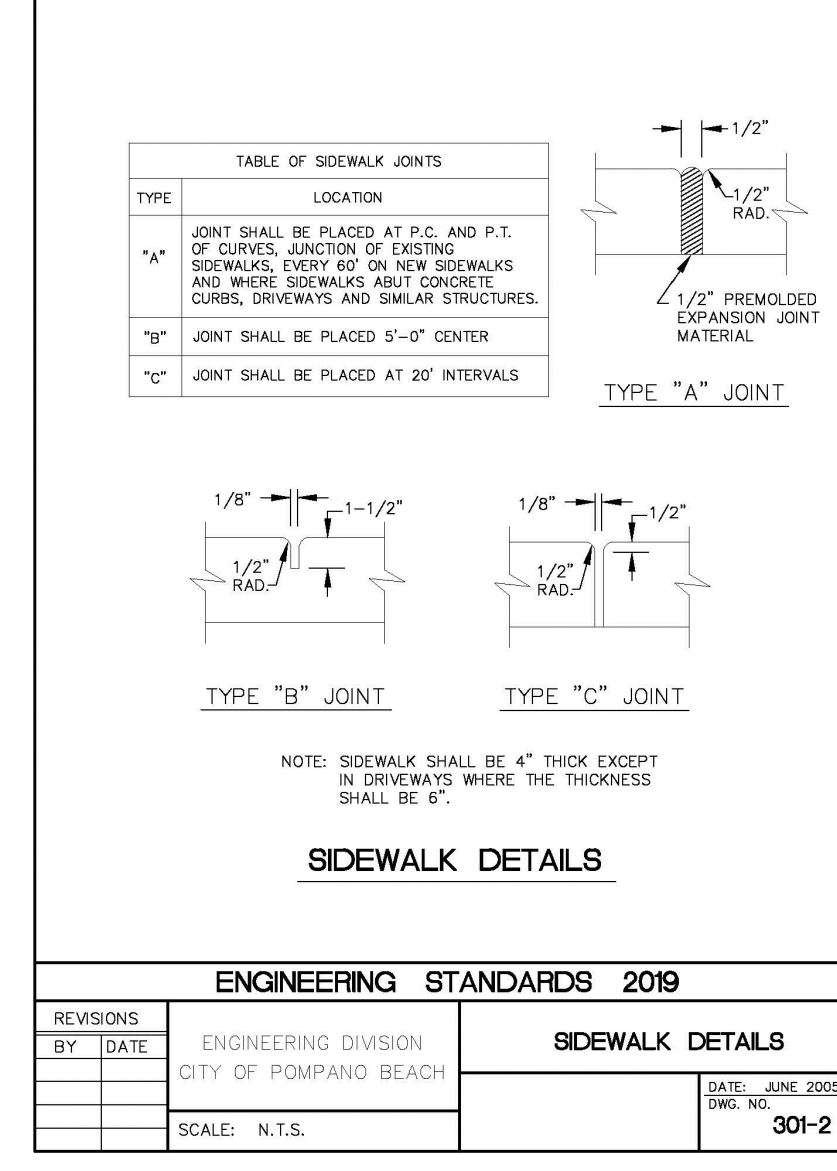
2 ACCESSIBLE PARKING SIGN



3 D CURB



4 CONCRETE SIDEWALK



JESSAMINE
DESIGN BUILD
5427 OAK TERRACE DRIVE
ORLANDO, FL 32839
(508) 736-6897

THE SATORI
4211 N FEDERAL HIGHWAY
POMPAÑO BEACH, FL

Sheet Title
SITE
DETAILS

Revision Dates
10/27/25 - CITY
COMMENTS
12/16/25 - CITY
COMMENTS

Date
12/16/2025

Sheet Number
SP-1.1

Seal

STEPHEN M FECCIA, PLA
LA 6667289